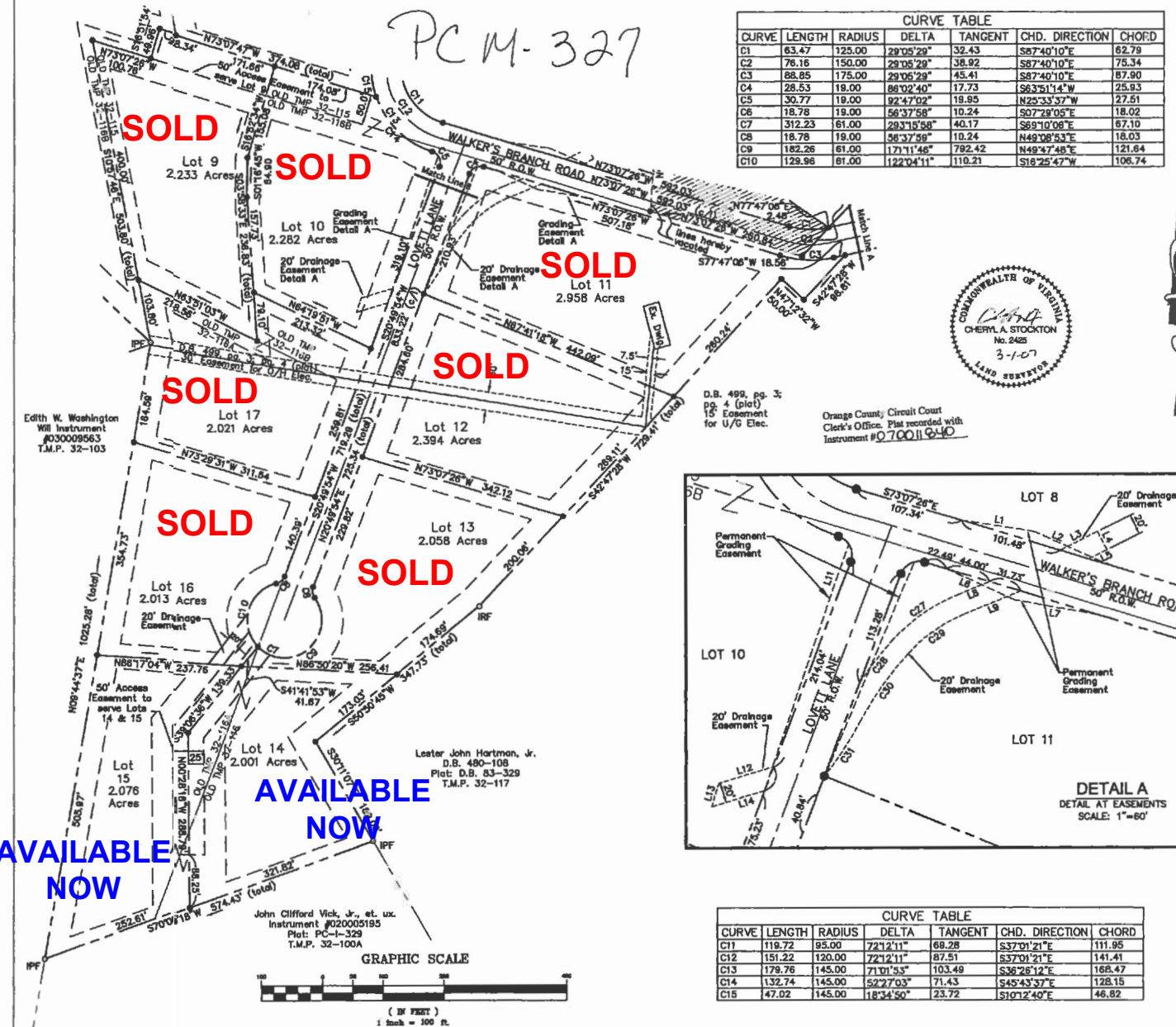


PCM-327

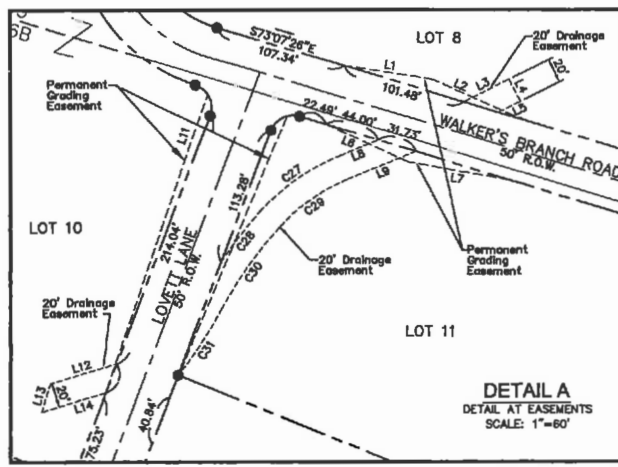


CURVE	LENGTH	RADIUS	DELTA	TANGENT	CHD. DIRECTION	CHORD
C1	63.47	125.00	28°05'29"	32.43	S87°40'10"E	62.78
C2	76.16	150.00	28°05'29"	38.92	S87°40'10"E	75.34
C3	88.85	175.00	28°05'29"	45.41	S87°40'10"E	87.90
C4	28.53	19.00	88°02'40"	17.73	S63°51'14"W	25.93
C5	30.77	19.00	92°47'02"	19.95	N25°33'37"W	27.51
C6	18.78	19.00	56°37'58"	10.24	S07°29'05"E	18.02
C7	312.23	61.00	28°15'58"	40.17	S89°10'08"E	67.10
C8	18.78	19.00	56°37'58"	10.24	N49°08'53"E	18.03
C9	182.26	61.00	171°11'46"	792.42	N49°27'46"E	121.84
C10	129.96	61.00	122°04'11"	110.21	S18°25'47"W	106.74

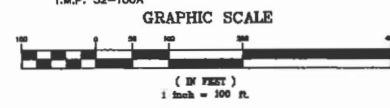


D.B. 499, pg. 3; pg. 4 (plat) 15' Easement for U/G Elec.

Orange County Circuit Court Clerk's Office. Plat recorded with Instrument #0700116410



CURVE	LENGTH	RADIUS	DELTA	TANGENT	CHD. DIRECTION	CHORD
C11	119.72	95.00	72°12'11"	68.28	S37°01'21"E	111.95
C12	151.22	120.00	72°12'11"	87.51	S37°01'21"E	141.41
C13	179.76	145.00	71°01'53"	103.49	S36°28'12"E	166.47
C14	132.74	145.00	52°27'03"	71.43	S45°43'37"E	128.15
C15	47.02	145.00	18°34'50"	23.72	S10°12'40"E	46.82

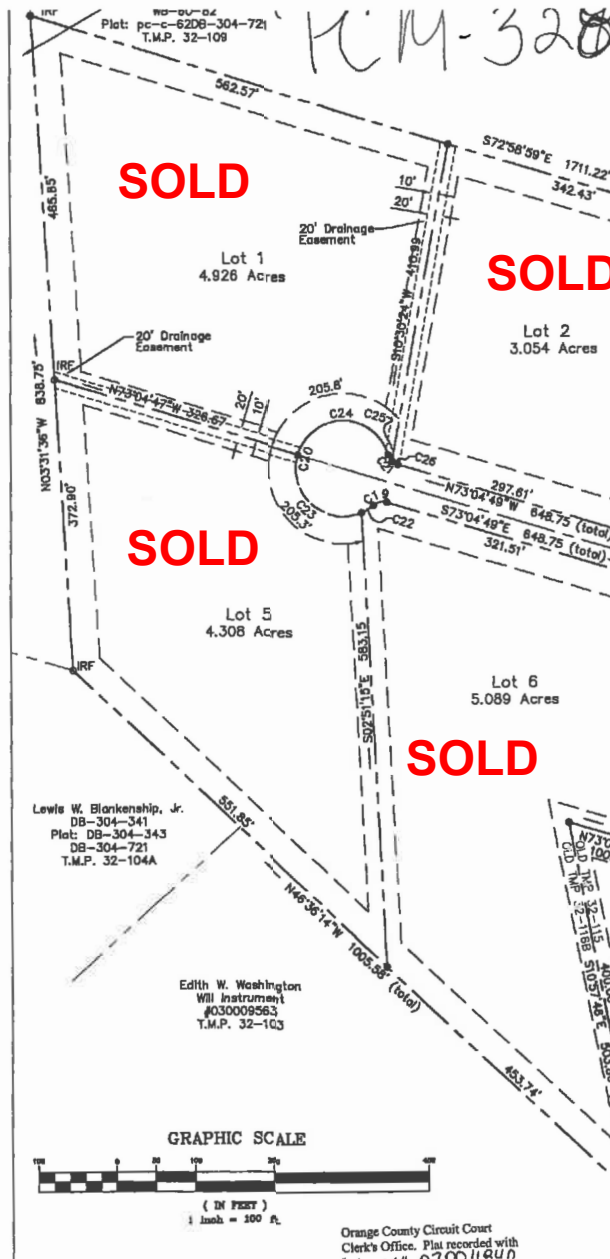


**Draper Aden Associates**  
 Engineering • Surveying • Environmental Services  
 Charlottesville, VA  
 Charlottesville, VA  
 Charlottesville, VA  
 434-285-8700 Fax: 434-985-5100  
 www.draperaden.com

**SUBDIVISION PLAT**  
**LOTS 1 - 17, WALKER'S BRANCH**  
 TAYLOR DISTRICT, ORANGE COUNTY, VIRGINIA

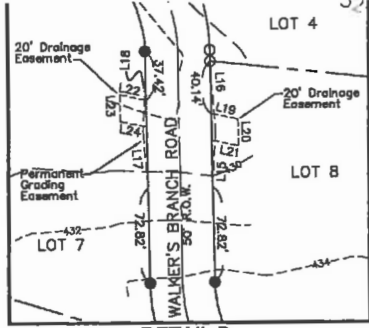
**REVISIONS**  
 June 20, 2008  
 FEBRUARY 28, 2007

DESIGNED BY: CAS  
 DRAWN BY: GCJ  
 CHECKED BY: CAS  
 SCALE: 1" = 100'  
 DATE: MAY 15, 2006  
 PROJECT NUMBER: CV05123-03  
 2 of 3

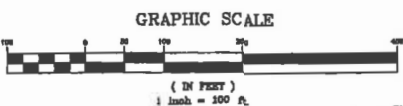


Handwritten: **KCM-320**

CURVE	LENGTH	RADIUS	DELTA	TANGENT	CHD. DIRECTION	CHORD
C1	63.47	125.00	29°05'29"	32.43	S87°40'10"E	62.79
C2	76.16	150.00	29°05'29"	36.92	S87°40'10"E	75.34
C3	88.85	175.00	29°05'29"	45.41	S87°40'10"E	87.90
C4	28.53	19.00	86°02'40"	17.73	S63°51'14"W	25.93
C11	119.72	95.00	72°12'11"	69.28	S37°01'21"E	111.95
C12	151.22	120.00	72°12'11"	87.51	S37°01'21"E	141.41
C13	178.76	145.00	71°01'53"	103.49	S38°26'12"E	168.47
C14	132.74	145.00	52°27'03"	71.43	S45°43'37"E	128.15



CURVE	LENGTH	RADIUS	DELTA	TANGENT	CHD. DIRECTION	CHORD
C15	47.02	145.00	18°34'50"	23.72	S101°2'40"E	46.82
C16	119.64	95.00	72°09'34"	69.22	N37°00'02"W	111.89
C17	151.13	120.00	72°09'34"	87.44	N37°00'02"W	141.34
C18	182.62	145.00	72°09'34"	105.66	N37°00'02"W	170.78
C19	18.78	19.00	56°37'59"	10.24	S78°38'12"W	18.02
C20	312.23	61.00	29°31'58"	40.17	S16°55'11"W	67.10
C21	18.78	19.00	56°37'59"	10.24	S44°45'50"E	18.02
C22	17.62	61.00	16°33'01"	8.87	N58°33'43"E	17.56
C23	138.48	61.00	130°04'58"	131.06	S48°07'18"E	110.61
C24	156.11	61.00	146°37'59"	203.54	N89°45'50"W	118.88



Orange County Circuit Court Clerk's Office. Plat recorded with [unclear] 200511640



**Draper Aden Associate**  
 Engineering • Surveying • Environmental Services  
 Charlottesville, VA  
 Blacksburg, VA  
 Richmond, VA  
 Hampton Roads, VA  
 708 Harris Street, Suite E  
 Charlottesville, VA 22903  
 434-255-0116  
 www.daa.com

**SUBDIVISION PLAT**  
**LOTS 1 - 17, WALKER'S BRANCH**  
 TAYLOR DISTRICT, ORANGE COUNTY, VIRGINIA

REVISIONS  
 June 20, 2006  
 FEBRUARY 28, 2007  
 October 18, 2007

DESIGNED BY: CAS  
 DRAWN BY: GCL  
 CHECKED BY: CAS  
 SCALE: 1" = 100'  
 DATE: MAY 15, 2006  
 PROJECT NUMBER: CV05123-03